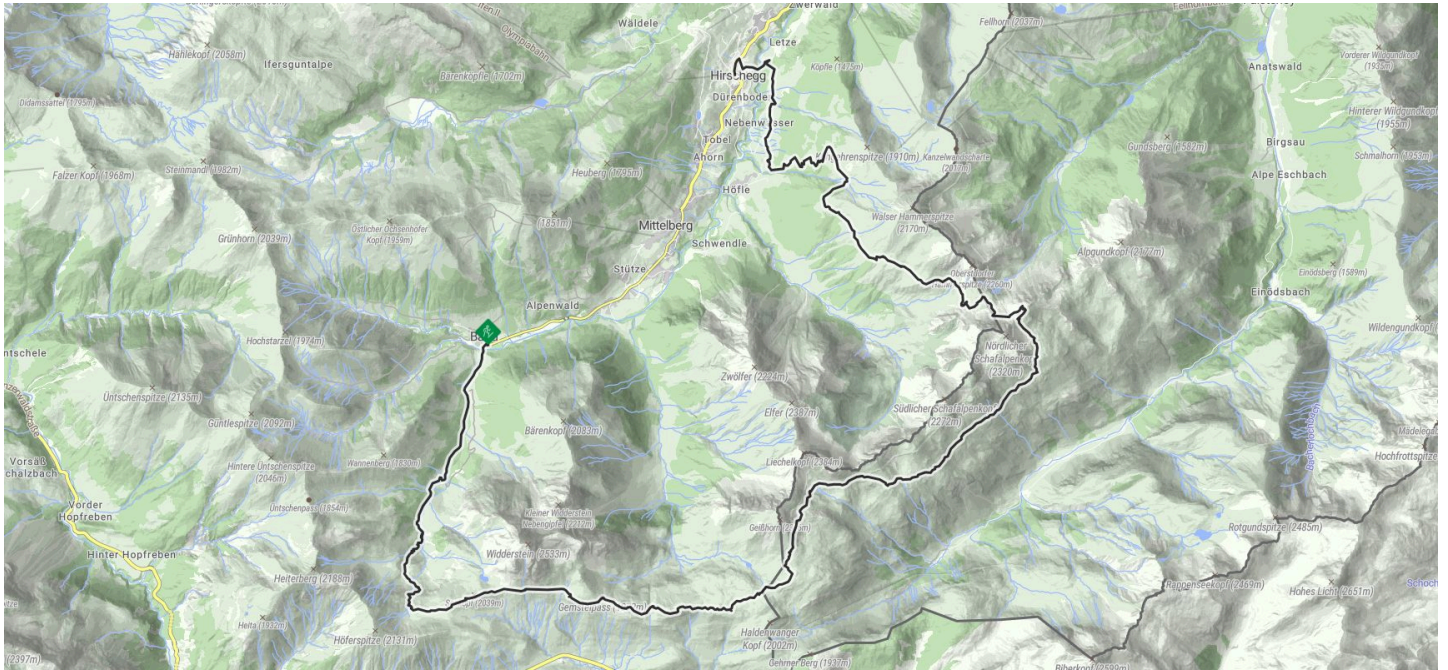


**HARD** TRAILRUNNING



## TOUR DESCRIPTION

Starting in the mountain village of Baad, the Walser Trail initially leads on a wide path into the Bärghunt Valley, past the Bärghunt Hut. Behind the Bärghunt Hut, the uphill becomes steeper and leads in the lower section over root sections through a forest and in the upper part over a varied mountain trail up to the Hochalpe Pass. From there, almost at the elevation at the foot of the great Widderstein to the Widderstein Hut and further over the Gemstelkoblat. Then a short downhill to the Mindelheimer Hut and along the Krumbach High Route, continuing in a sequence of short ascents and descents with views of the Allgäu main ridge. The climb to the Fidere Notch, the highest point of this route, is steep again. From there follows a downhill through a scree field to the Fidere Pass Hut. A long downhill continues past the Wannenalpe to the Inner Kuhgehrenalp. From there downhill in switchbacks over the Brandalpe into the Hirschegg district Nebenwasser and with a short, steep final ascent to the Walser House in Hirschegg.

## ROUTE DESCRIPTION

Baad - Bärghunt Valley - Bärghunt Hut - Hochalpe Pass - Widderstein Hut - Gemstelkoblat - Mindelheimer Hut - Krumbach High Route - Fidere Notch - Fidere Pass Hut. - Wannenalpe - Inner Kuhgehrenalp - Brandalpe - Nebenwasser - Walser House, Hirschegg

## RECOMMENDED EQUIPMENT

The Walser Trail is a technically and physically extremely demanding course. It is recommended only for experienced trail runners with the appropriate equipment and suitable conditions.

### EMERGENCY CALL:

144 Alpine emergencies Vorarlberg

112 European emergency call (works with any mobile phone/network)

Weather-adapted trailrunning equipment including provisions.

## FURTHER INFO & LINKS

### Further links

The Walser Trail, at 28 kilometers and 1,700 meters of elevation, is the middle of the three routes at the annual trailrunning event in the Kleinwalsertal. Information about the Walser Trail Challenge at [www.trailchallenge.at](http://www.trailchallenge.at)

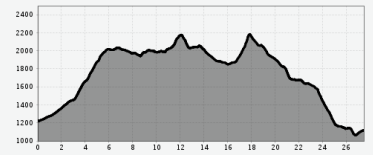
Nature experience map, scale 1:12,000; hiking map Kleinwalsertal (with hiking guide), scale 1:25,000; DAV hiking map, scale 1:25,000; the respective maps are available for purchase at the Walser House Hirschegg.

↔ Distance  
**27.52 KM**

🕒 Duration  
**6:05 H**

⚠️ Altitude meters  
**1554 M**

⚠️ Highest point  
**2199 M**



### Condition



### Best season

JAN FEB MAR APR **MAI** **JUN**  
**JUL** **AUG** **SEP** **OCT** NOV DEC

**Sart:** Baad

**Goal:** Riezlern

Morning **0 °C**  
MOUNTAIN  
**10 °C**  
VALLEY



Noon **1 °C**  
MOUNTAIN  
**12 °C**  
VALLEY



Evening **2 °C**  
MOUNTAIN  
**12 °C**  
VALLEY

